

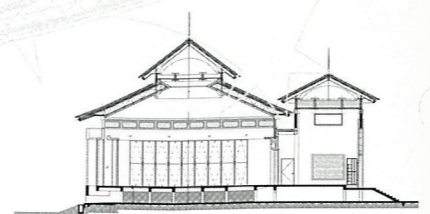
*recent  
malaysian  
architecture*

essays by Philip Goad and Ngiam  
photography by Patrick Bingham-Hall

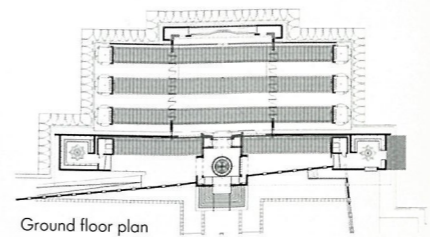


# masjid wan alwi

Design Network Architects



Section



Ground floor plan

The primary intention behind the design and construction of this mosque in suburban Kuching was to reassert a feeling of neighborhood and traditional Malay lifestyle. As a drift to the cities throughout Malaysia has occurred, there has been a subsequent loss of the communal feeling of the *kampung*. Masjid Wan Alwi was built with the financial support of the family who developed the surrounding suburb, as a gift to the local Muslim population. The mosque has a strong connection with the community, a relationship typically seen in the *Mahgribi* of northern African countries. The forecourts, with fountains and plantings, serve as open space for community gatherings and as a transition zone before entering the prayer hall. The architecture borrows from local built forms, with pitched roofs, shady overhangs and permeable walls, whilst the square plan of the main Prayer Hall lies beneath a pyramidal *belian* roof.

Left: Entry from east  
Right: Prayer room

