

Term 2021-2022 22nd Oct 2021
PPK469/01/2017(034673)

News+FLASH is the digital offspring of INTERSECTION. It is published digitally each fortnight for the foreseeable future, until we run out of ideas, articles or money.



PROJECTS FEATURE:
SONG HOUSE
by SML Architects
- PG 2



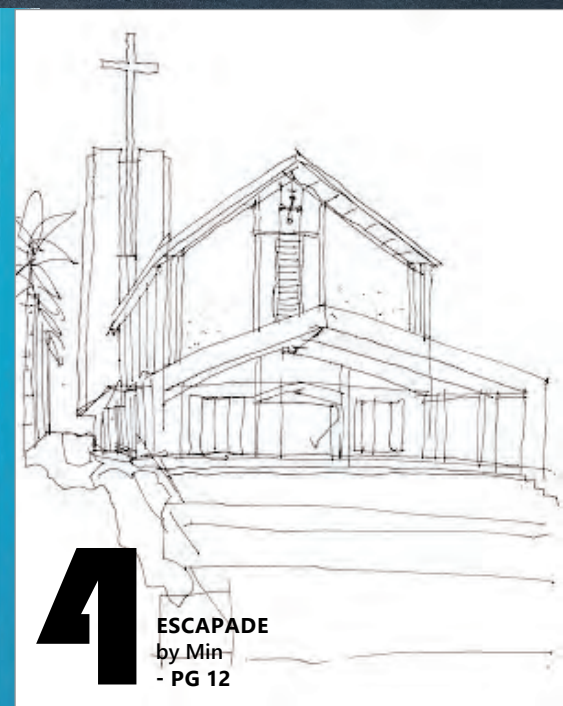
2

PROJECTS IN PROGRESS :
LA PROMENADE PRECINCT GRANDE
by David Ong Architect
- PG 6



3

ID PROJECTS FEATURE:
YOFFEE CAFE
by INTODesign Lab
- PG 10



4

ESCAPADE
by Min
- PG 12





SONG HOUSE

by SML Architects

ARCHITECT'S STATEMENT

Brief & Response

Song House is an urban bungalow located at the fringe of a housing area off Jalan Song, Kuching. The client is a couple in their fifties who shared their house with their elderly parents and siblings.

The brief was to have a modern tropical house which is naturally ventilated, naturally lit, open yet secure. Natural ventilation was a key requirement as the family avoided air-conditioning as much as possible.

The site lies at the end of a residential cul-de-sac with one side facing a large open land which we were immediately drawn to as a source for views, wind and relief from neighbours. The design intent for this house was to embrace the natural elements and to harness the sun and wind as part of the living experience.

This was done through the introduction of parallel north-west/south-east spines to organize and layer the living spaces. These spines are either punctured or pulled apart at various sections to harvest light and air. Attached to the spines at opposite ends are two light and wind funnels that continuously draw air into the spaces within.

Architect	: SML Architects
C&S Engineer	: Perunding J.L. Maju
Contractor	: Syarikat Kah Seng Construction Sdn Bhd



Planning

Planning-wise, the house is divided into three main parallel zones or cores. The service areas containing the wet-kitchen, maid's room, washing and drying yards are concentrated on Western side. This single-storey section shields the living spaces on ground floor and on the first floor serves as a roof garden that shelter the bedroom beyond.

Next to the service zone lies the intermediary spaces containing the entrance foyer, dry kitchen and relaxation area. A central circulation spine then slices through the house, divides and serves this and the Eastern main living core of the house, containing the living room, dining, gymnasium and home-office.

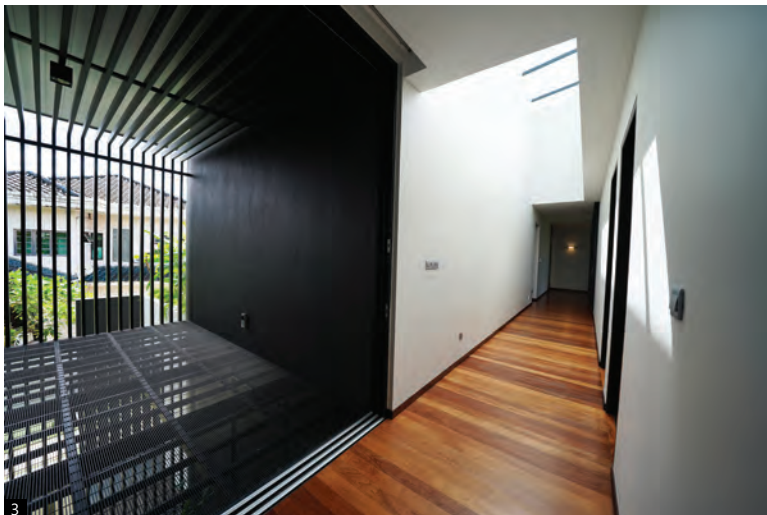
This spine is expressed as a feature wall within the house with an attached timber walkway running through the length of the building. It then continues to journey outwards only to end at the garden walls, extending the living experience outwards.

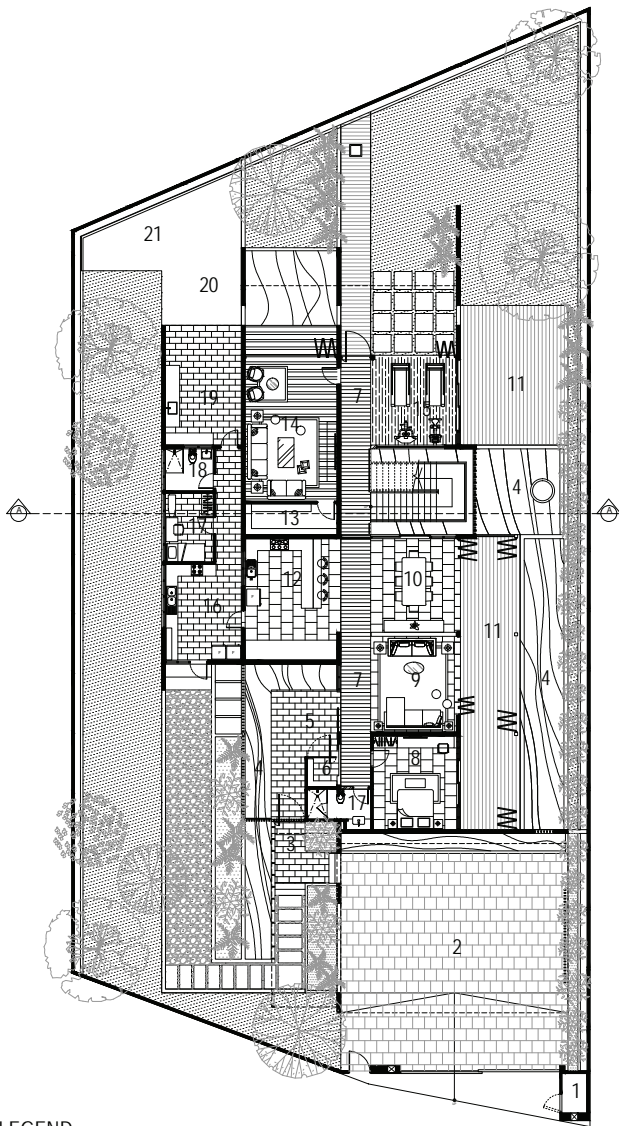
Terraces & Water

The main living core is sheltered by a band of transitional terraces with folding screens and cooling water bodies. Cooling water elements, terraces or courtyards are also placed around the house to serve their inner counterparts. The intent to harness as much natural light and ventilation as possible really set out how we approached the design and expressed the form.

CAPTIONS

1. Song House singing at dusk.
2. Naturally ventilated and lit, the screened staircase wind funnel allows users to securely move between floors.
3. Natural light and air are channeled into the first floor gallery serving the bedrooms. The other end of this gallery lies the main staircase which simultaneously helps the house breathe.
4. The main staircase floating above water. This is one of two 'funnels' that constantly draw in breezes and light into the whole house.
5. The screened main entrance foyer viewed from the garden. Permeability to views, natural light and air.

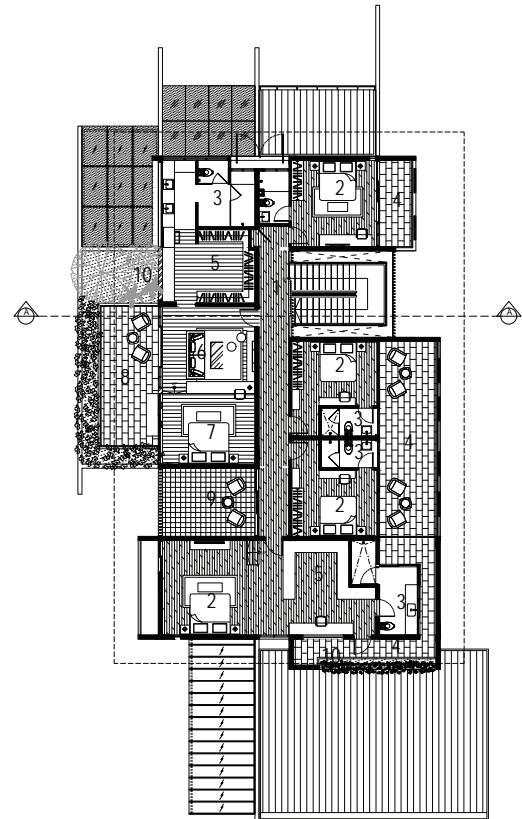
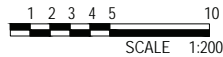




LEGEND

1. BIN CENTRE
2. CAR PORCH
3. ENTRANCE
4. POOL
5. FOYER
6. SHOE STORAGE
7. GALLERY
8. GUEST ROOM
9. LIVING
10. DINING
11. TERRACE
12. DRY KITCHEN
13. STORAGE
14. FAMILY ROOM
15. GYM
16. WET KITCHEN
17. MAID'S ROOM
18. WC
19. LAUNDRY
20. DRYING YARD
21. DOG HOUSE

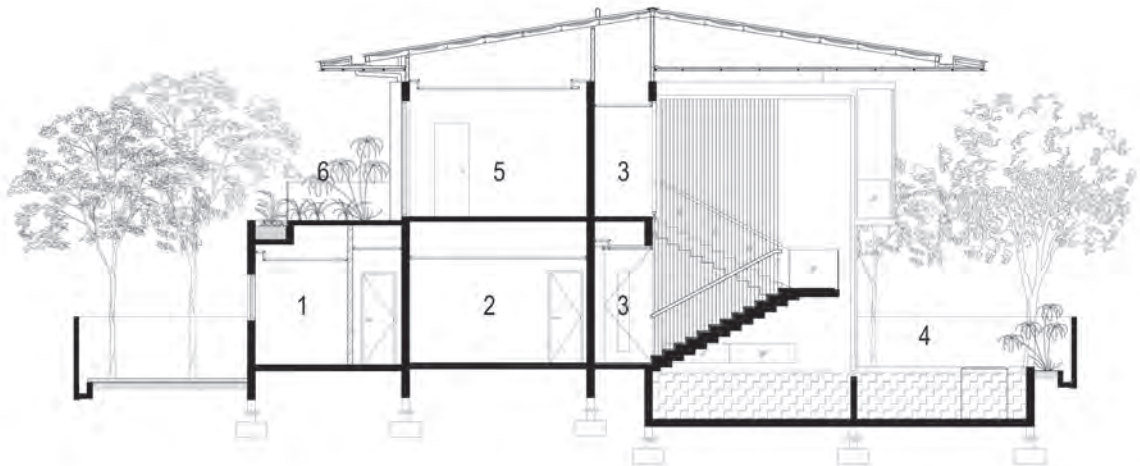
GROUND FLOOR PLAN



LEGEND

1. GALLERY
2. BEDROOM
3. WC
4. TERRACE
5. WALK-IN-WARDROBE
6. PRIVATE LIVING
7. MASTER ROOM
8. PRIVATE TERRACE
9. CONVERSATION FUNNEL
10. PLANTER

FIRST FLOOR PLAN



LEGEND

1. MAID'S ROOM
2. STORAGE
3. GALLERY
4. TERRACE
5. MASTER ROOM
6. PRIVATE TERRACE

SECTION A





Cooling Down & Lighting up

The planes are firstly punctured or pulled apart at various sections to harvest light and air. To really draw in constant breezes into and around the house and to make the spaces breathe, two open wind funnels were inserted at opposing ends of the house.

One of the funnels takes the form of a double volume screened entrance foyer with a permeable floating balcony. The other, a floating staircase and stairwell open to the elements. Both funnels are also integrated with waterbodies to further cool down passing air and then screened to filter direct eastern or western sun-light and for security.

Light on the other hand, is drawn into the building through large windows and doors, forming most of the external skin. A roof with deep overhangs hovers over the whole house like a big umbrella, in some areas overhanging up to 8 metres. On the upper floor, a sky-light lights up the central circulation spine that feeds the bedrooms and connects the two wind funnels.

END

CAPTIONS

6. The central spine & walkway slices through.
- 7 & 8. An 'invisible' floor hovering above the main entrance foyer. Letting light and air in as play happens.
9. The form speaks as the house takes shape.
10. Load-testing with project heavy-weights.

