

# FLASH

15

Term 2021-2022 17<sup>th</sup> Dec 2021  
PPK469/01/2017(034673)

*News+FLASH is the digital offspring of INTERSECTION. It is published digitally each fortnight for the foreseeable future, until we run out of ideas, articles or money.*



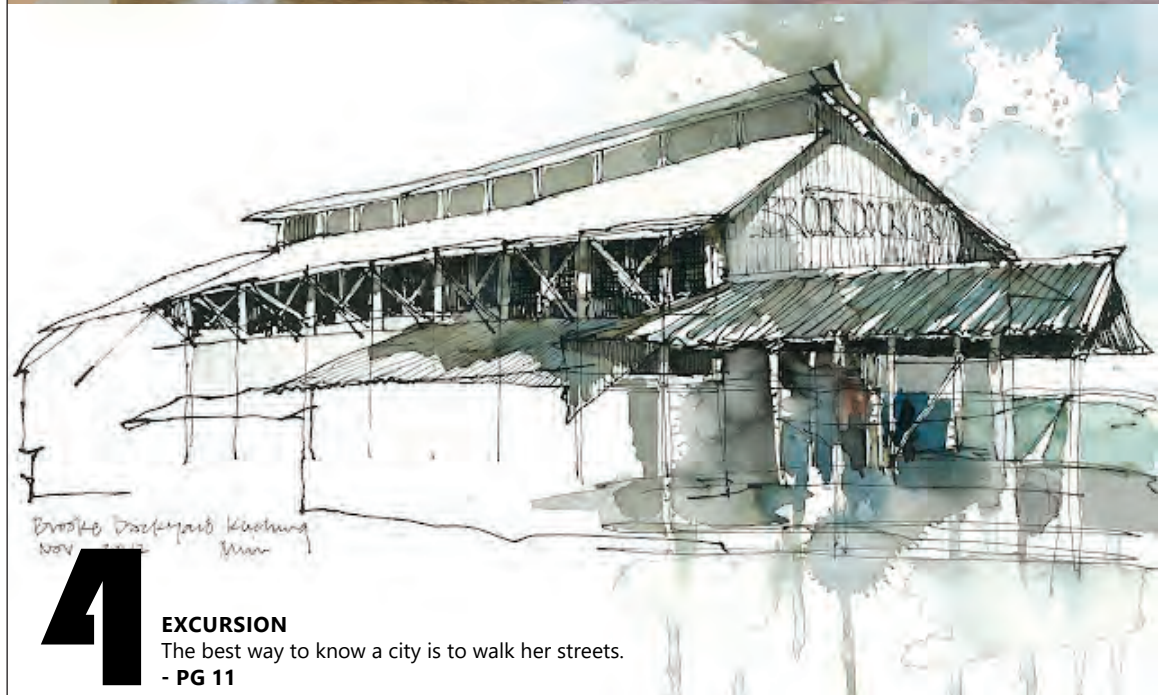
**1** PROJECTS FEATURE:  
**CAT HOUSE**  
by MinWee Architect  
- PG 2



**2** ID PROJECTS FEATURE:  
**GENE'S OUTLET HAIR SALON**  
by J HOUS STUDIO  
- PG 7



**3** IN YOUR OPINION, WILL ARCHITECTS  
BE REPLACED BY AI IN THE FUTURE?  
WHAT CAN WE DO TO PRESERVE  
THE ROLE OF ARCHITECTS?  
Written by Ar. Ng Chee Wee  
- PG 9



**4** EXCURSION  
The best way to know a city is to walk her streets.  
- PG 11







1

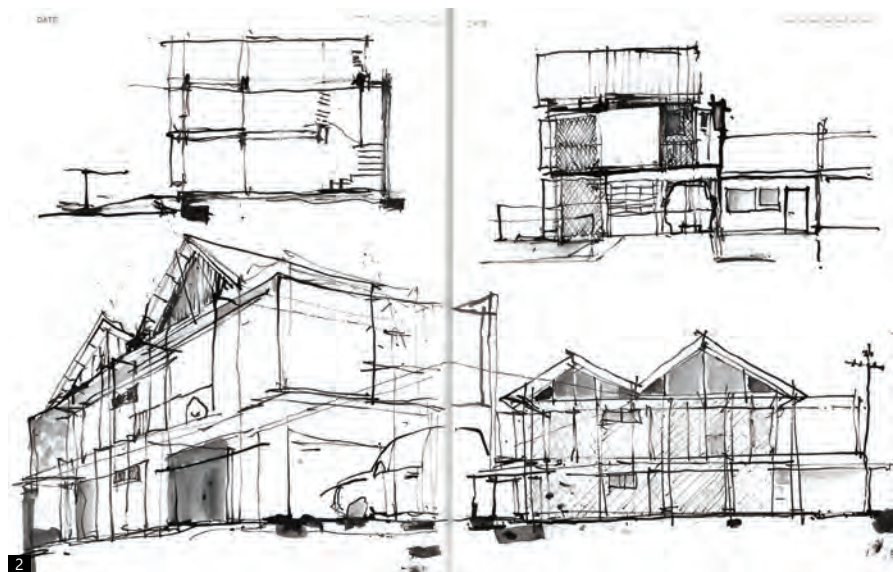
## CAT HOUSE

by MinWee Architect

### ARCHITECT'S STATEMENT

#### History

The corner terrace is located in the old residential enclave of Salak South, which seemed like an odd choice for a young couple who had worked overseas for last two decades. But if one were to consider the proximity to neighbourhood shops and work, and throw in the nostalgia of having grown up in this area - then it seems like a perfectly sensible idea. Especially if one appreciates a locality with history and local colour. It is probably part of the movement to re-inhabit the city, to return to it and fill in the gaps left by the departed (to a better place or to the suburban sprawl).



2

#### CAPTIONS

1. New house frontage; the former roof tiles were used in the front gate post (left)
2. Initial design sketches.





*The existing house prior to the renovation.*

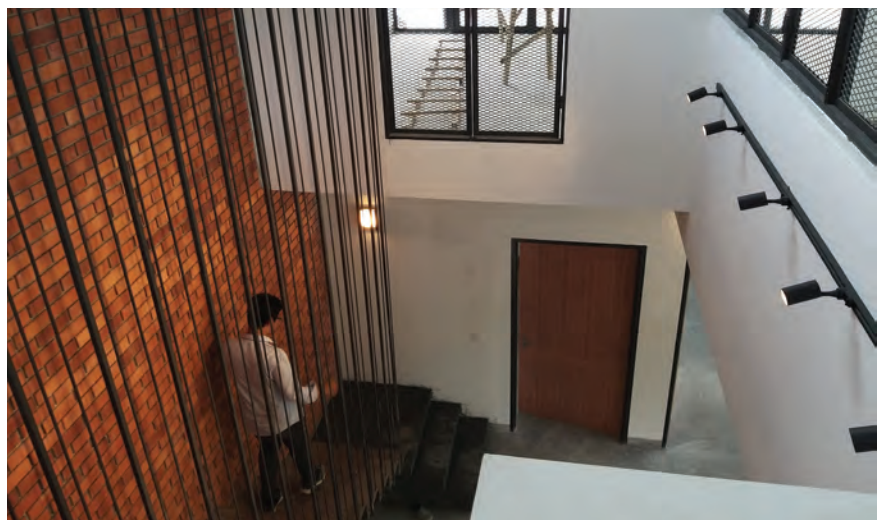


### Existing house

The existing house was one we have all visited before, on Chinese New Year visits to often forgotten aunts at a difficult-to-find maze of a housing estate. A single storey terrace with a 6.7 metre frontage, divided into two to share between the living room and the master bedroom, entered from the front of the house. This was followed by another bedroom as the living room evolves into a dining space with the help of a room divider/shelf. There was a third room which faced the back lane, next to the kitchen and toilets. The toilet and bathrooms were in two compartments, no doubt to cater for the number of people in the house. This type of housing and planning was part of the early wave of housing estate or 'taman' development to cater for a newly prosperous Malaysia.

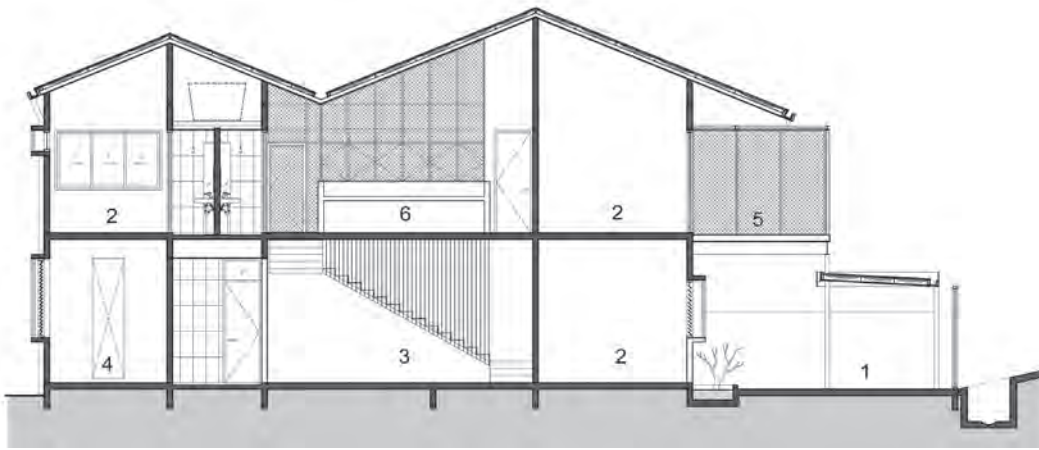


*The extension was primarily built in steel to reduce the loading and increase permeability and ventilation.*



*The bare brick wall and the suspended steel stairs contrast and complement each other.*



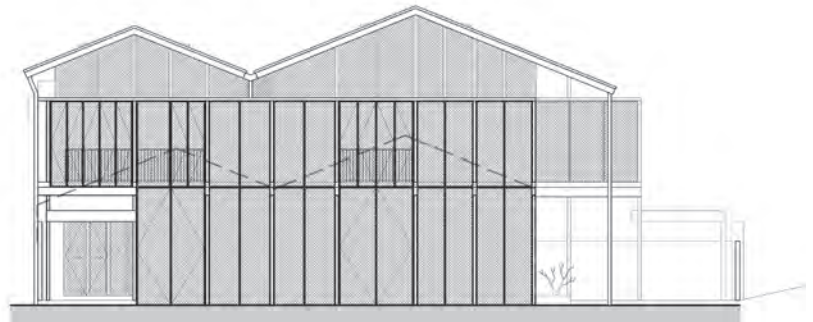


**SECTION B**

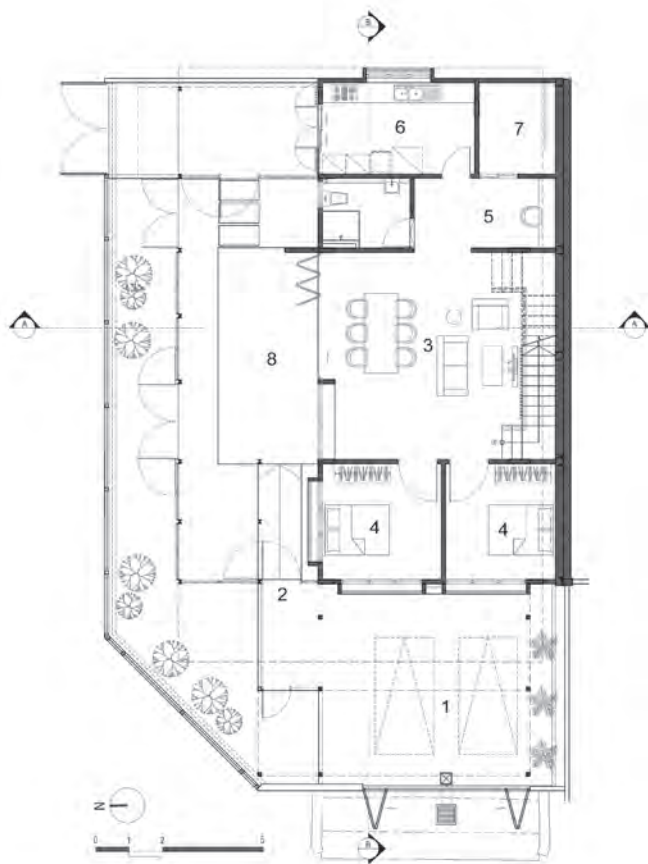
- LEGEND**  
 1. car porch  
 2. bedrooms  
 3. dining room  
 4. kitchen  
 5. front varandah  
 6. lounge



**FRONT ELEVATION**



**LEFT ELEVATION**



**GROUND FLOOR PLAN**

- LEGEND**  
 1. car porch  
 2. main entrance  
 3. dining room & living room  
 4. bedrooms  
 5. library  
 6. kitchen  
 7. courtyard  
 8. terrace



**FIRST FLOOR PLAN**

- LEGEND**  
 1. lounge  
 2. varandah  
 3. bedrooms  
 4. office  
 5. front varandah  
 6. back varandah





3

## Brief

This was to be a house for a dozen cats, several dogs and 3 humans. There was a simple physical brief, primarily about the different zones to be occupied (and segregated) by the feline and canine residents, and also about extending the floor area of the existing house by adding another floor, which we did by using steel primarily to reduce the structural weight of the overall construction.

There was an understanding that the house would be easy to clean and maintain, and well ventilated in view of the number of cats (18) and dogs (2). We continued to detail the external enclosure in a light steel frame with expanded metal mesh; creating a feeling of lightness and airy-ness, and visibility which did not intrude into the privacy of the home. The spaces for the human owners are enclosed within more traditional construction of brick and plaster.

## Response

We changed the entrance to the house from the front to the centre of the house, entering through a covered landscaped court. Entering into the centre of the house meant that the habitable rooms can be placed at the four corners of the floor plan - where they have views and privacy. The living and dining space is central to the activities of this house - it is an indoor space with an outdoor component; the screened terrace that extends into the garden where the steel mesh doors are opened. The kitchen and toilet are retained in their original position with the new toilets stacked on top of the existing ones to ease piping connections. A small courtyard is carved out of the building envelope next to the kitchen, to provide cross ventilation, and house water tanks and pumps.

The upstairs floor plan is almost identical to the ground floor, with one difference where the kitchen is replaced by a studio and work space. It overlooks the courtyard which helps to ventilate the space and provides a secondary source of natural light. The family space upstairs is mostly for the feline family, it is where they are housed and fed, sleep and play, etc.



4



5



6

## CAPTIONS

3. The house uses only 5 major materials - concrete, steel, aluminium and glass, brick.
4. Cats live on the first floor...
5. while dogs live on the ground floor, and the humans live where the cats let them.
6. This explains the double gables which were used to great advantage in creating tall vaulted ceilings for the upstairs rooms.





We initially had a more dynamic architectural outlook for the house - but the local authorities required us to emulate the existing pitched roof-scape of the neighbourhood. This explains the roof-form of the new house; the double gables running along the length of the house. We used this to our great advantage in creating tall vaulted ceilings for the upstairs rooms, adding again to the overall lightness of the house.

The construction budget was very small despite the relatively large floor areas; the floor finish is cement render and the soffits of concrete slabs are left unfinished. There are small areas of extravagance such as the suspended steel stairs (easier to clean under) against a backdrop of bare red brick (we retained the existing party wall and built an independent structure front of it). Otherwise the house is an exercise in restraint, using only 5 major materials - concrete, steel, aluminium and glass, brick. The old roof tiles were re-constructed as the front gate post.

The owners moved at the end of 2019, and appear to have settled into their routine. The cats live upstairs separated by a steel mesh screen from the dogs who live downstairs; the humans live in the rooms when they are allowed (by the cats).

END

Location	: Taman Salak Selatan, Kuala Lumpur
Client	: Mike and Winnie
Principal Use	: Residence
Architect	: Minwee Architect
Project Principal	: Wee Hii Min
Project Team	: Lee Peng Hui, Ileana Quiroz, Sean Wee
Design Period	: 3 months
Construction Period	: 12 months
Date of Completion	: Oct 2019
Site Area	: 265sqm
Floor Area	: 360sqm
Project Cost	: RM800,000
Construction Company	: Chew Heng Yip CTL Building Culture Sdn Bhd
Civil Engineer	: CJ Consult
Photography	: Michael Wong, Sean Wee

**CAPTIONS**

7. Local authorities required us to emulate the existing pitched roof-scape of the neighbourhood.
8. A simple brief to carve out zones for humans to coexist with 20 animals was still made possible and relevant, turning the space into a home for all.