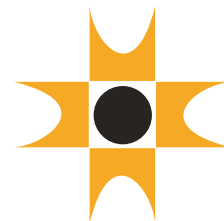


INTERSECTION

EDITOR'S LETTER



PAM
Pertubuhan Akitek
Malaysia
Sarawak Chapter

1/ 2014-15 July

C.P.D. – Continual Professional Development

This is officially the first issue of INTERSECTION following the 2014 AGM which brought on the new term. So, in the spirit of Continual Professional (and Personal) Development – our tri-party team (Publication, IT and Graduates) has decided on this new look and a fresh format of reporting. In an effort to be inclusive and comprehensive, each sub-committee is now given a column and encouraged to report on their activities and update our readers on issues that concern our readers. So that this newsletter is made up of many voices and opinions.

In this issue, we can see that the former Government Liaison sub-committee has grown into a larger entity; the Practice sub-committee is still headed by Ar. Bong Joon Hin, nowadays assisted by many more PAM members including 4 Past Chairmen. Ar. Ivy Jong (Graduates) has been very busy, with plans for a study trip to Penang, a graduates' exhibition and a kayaking expedition in August. Meanwhile, Ar. Chai Si Yong (IT) updates us on web-activities and announces the launching of WAD 4.0; he recently teamed up with Ar. Bong to talk to students about a career in Architecture.

Ar. Mike Boon is reliable as usual in providing updates on conservation; he writes about the Fort Alice project in this issue. Mike was on the jury panel for the PAM Awards this year (see page 3 for an article on the relevance of our National Architecture Awards). On that note, we should thank Ar. Peter Wong (CPD) for successfully inviting the award-winning husband and wife team, WHBC Architect to give a lecture in Kuching; details about this and other CPD events in Peter's column.

Readers would be glad to know that some of our regular sections as still here – we feature Seniformasi Sdn. Bhd. and read about some of their key projects, we share our lessons learnt from our trip to Morocco and Spain and remind ourselves about the importance of mentoring young architects for the health of our profession. All in a day's work for our C.P.D. - much of which takes place outside the seminar halls and without LAM CPD points.

Keep Calm and hug an architect,

Min, Ivy and Si Yong.

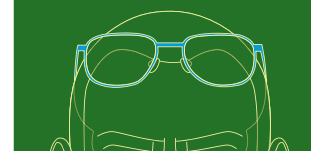
PAM Awards -
How relevant is it to
Malaysian Architecture?

Profile:
Akitek Seniformasi

Ya-ia! Ola!

Sub-Committee
Reports

The Notorious Baldy
min-linesonpaper.blogspot.com



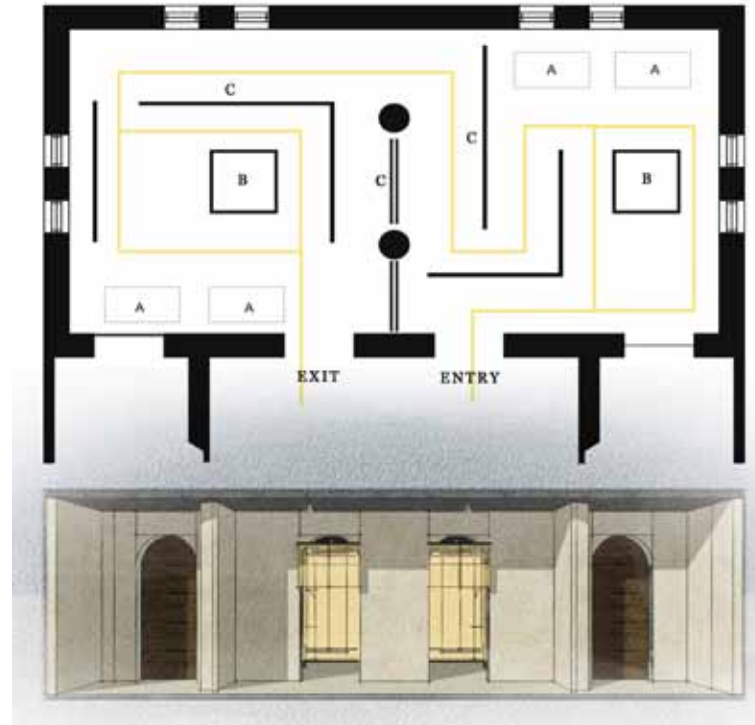
Student Section

Moulding the Next Generation

At DATUM KL last month, there was some discussion amongst the speakers and audience on the subject of mentoring, and the consensus was that it moulded the career of many of the prominent speakers there. Lyndon Neri of Neri & Hu described his internship with Michael Graves as “a shaping of his working attitude” rather than the adoption of Graves’s architectural style. Yang Zhao from China talked about his master-student relationship with Pritzker Prize winner, Kazuyo Sejima saying that she was very concise, but at times curt. But never imposing instead gently prodding and nudging him towards his design of the “Home for all” pavilion.

Many local firms have interns in their studios nowadays – so this serves as a reminder, that as mentors (and not employers), we have a responsibility to impart the knowledge, guidance and at times, the discipline that is required in our profession. For those architects who are more interested in what the student can do for them will have a short-lived relationship with them; approximately three months at the most. Unless one signs a contract with them to ensure their loyalty but I question the ethics of doing that when our role is to introduce young minds into our noble profession.

Perhaps that best solution is a balance of assignments and projects as practiced in our studio; the first is aimed at teaching the intern and lasts the duration of the tenure while the latter is ‘real work’ - usually part of an on-going project with a real date line. The best student projects are those that bridge both categories such as the one shown here, which is small yet complex enough for several interns to take on as their own project with some guidance from a mentor. This was a real project while it lasted but unfortunately a change of clients effectively cancelled it. The students will not see this project built, but they will have a comprehensive portfolio item when they leave our office.



Floor Plan & Front Elevation
A. Display Cabinet
B. Light Columns
C. Translucent Walls



Architectural model.



Video Projection.



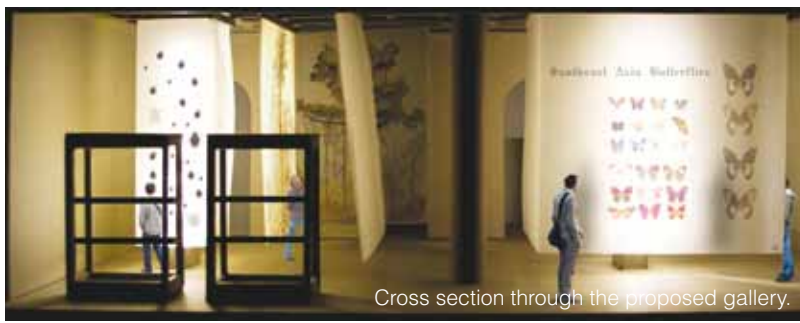
Urban Sketchers Kuching

Almost one year ago, Peggy Wong started the USK group with architecture student, Azie Morni and Wee Hii Min with the objective of recording our towns in sketches and sharing them on public media. The group has grown to about 30 regular members from different fields of expertise and backgrounds. To date, USK has conducted numerous sketch crawls and attracted the attention of the local media. The group recently loaned the sketches to the Sarawak Heritage Society for the society’s membership drive.

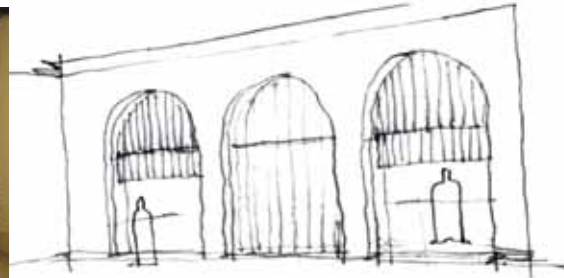
Urban Sketchers Kuching welcome the general public to join their sketching expeditions - for more information check out the activities on FB group @ <https://www.facebook.com/groups/760234620666841/>



Launch of SHS & USK Exhibition at The Ranees.
(Image Courtesy of The Ranees)



Cross section through the proposed gallery.



3 Archways:
Shut the right one and use as graphic or signage panel.
The other two can be entry or egress.

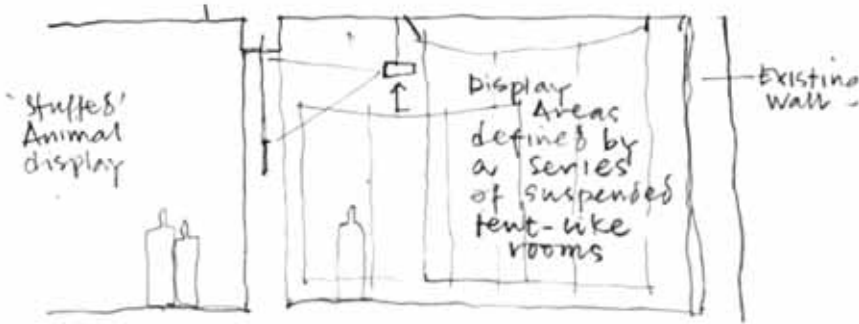
The Wallace Gallery - design statement

The genesis for the design of this gallery came after a conversation with Louise about 'moth-nets' - a device that Alfred Russell Wallace used to trap insects for his research and collection. The idea came at an opportune time, when we were struggling with the scope of Wallace's research and the breadth of his travels - this would be relevant to Wallace's time in Sarawak.

A series of translucent 'rooms' bathed in the warm glow of hurricane lamps not only re-creates Wallace's time in the jungle, but can be printed with information, used to display artefacts and specimens, and as projection screens for videos. This is a contemporary approach for the exhibition of a historical subject, which would appeal to younger members of the general public and in order to lend historical weight to the exhibition - the original display cabinets from the Museum and a replica of Wallace's work place in the Sarawakian jungle will form part of our gallery.



Concept for Wallace's Gallery.



Suspended tent-like room.



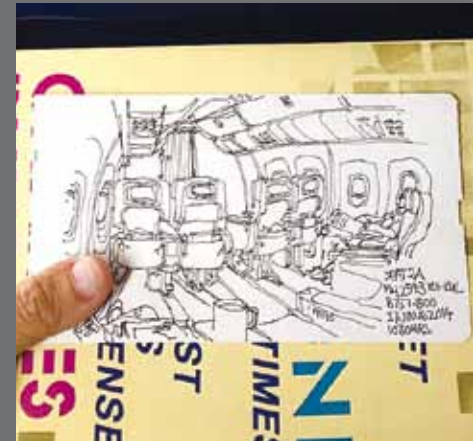
Audio would form part of this exhibition as well - insects and bird sounds.



Artworks of USK exhibited at The Raneer.
(Image Courtesy of The Raneer)



Sketch by fellow urban sketcher, Ms Yeo.
(Image Courtesy of USK)



Sketch by Peggy, on the back of her air ticket.
(Image Courtesy of USK)