



PAM
 Pertubuhan Akitek
 Malaysia
 Sarawak Chapter

Intersection

www.pamsc.org.my

PAMSC Quarterly
 Newsletter 02/2012

Oct 2012
 For Members Only

PAM AWARDS 2012

more onPg 3



Asean Bintulu Fertilizer New Administrative Office Building
 Silver Medal (Commercial Category)

Contents



Profile - Atelier Timur
Pg 4



Women in Architecture :
 Part 2 Architecture and
 Motherhood (a.k.a diapers
 and drawing boards).....Pg 8



The Restoration of
 Yang Chun Tai, Kuching
Pg 15

PAM AWARDS 2012



The drop off porch with the 4 storey Office Building and the Surau in the background.



Each office floor has outdoor terraces that overlook the Garden Court.

For the past 7 years, Sarawakian architects have continuously featured in the Awards. This year, Design Network Architects S/B (DNA) won a Silver Award in the Commercial Category for their 'Asean Bintulu Fertilizer' New Administrative Office Building in Bintulu.

The 4-storey office building takes a fresh look at this typology in two key aspects - the inclusion of existing buildings in the new building programme, and the injection of communal spaces within the work environment.

The new building sits partially within the footprint of the former double-storey offices, two of these structures were retained and adapted into the IT and Medical centres while the "footprints" of the demolished blocks define the Tree Court in front of this building. The office's linear plan is orientated north-south to optimise natural lighting and views of the hill slope towards the north and the Tree Court due south. Each floor has several sky terraces for the staff to own a portion of outdoor space.

The 4-storey office block with its business-like demeanour is a contrast to the more luxuriant 2-storey Entrance Lobby Block. The landscaping takes cues from the building grid and linear hedges rows are interspersed with timber seats.

The success of Sarawakian architects in the Awards is encouragement for other local architects to participate and shows that there are patrons who appreciate the value of design in architecture and are willing to invest in achieving this quality.



The main lobby.

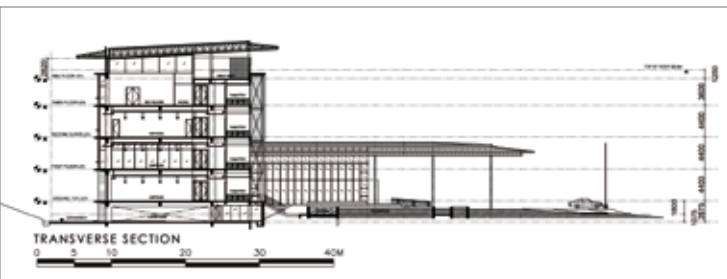
Designed by the architects and built from discarded steel tubing from the client's yard, this wall sculpture reinforces DNA's design thinking which looks to weave the past with the present in a meaningful dialogue.



Raw materials for 3-D graffiti.



Making it up as we go...



TRANSVERSE SECTION



GROUND FLOOR PLAN



With all the components in place, the mural does not look half bad.